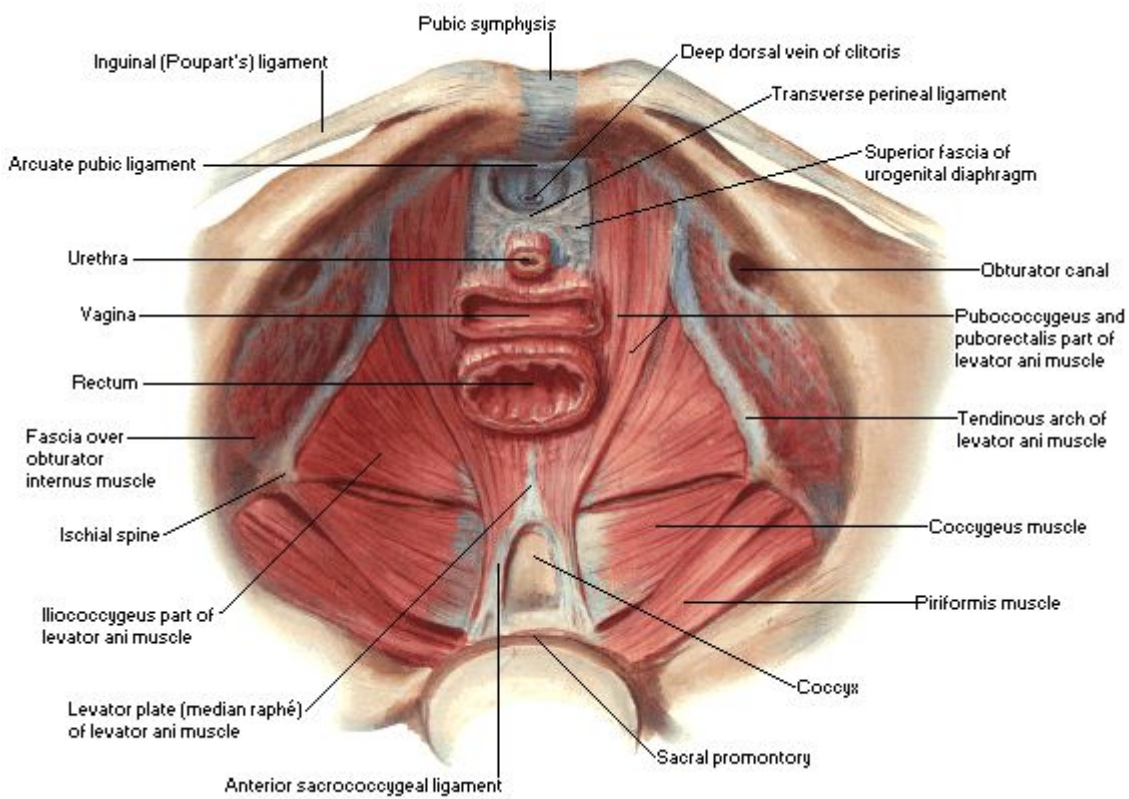
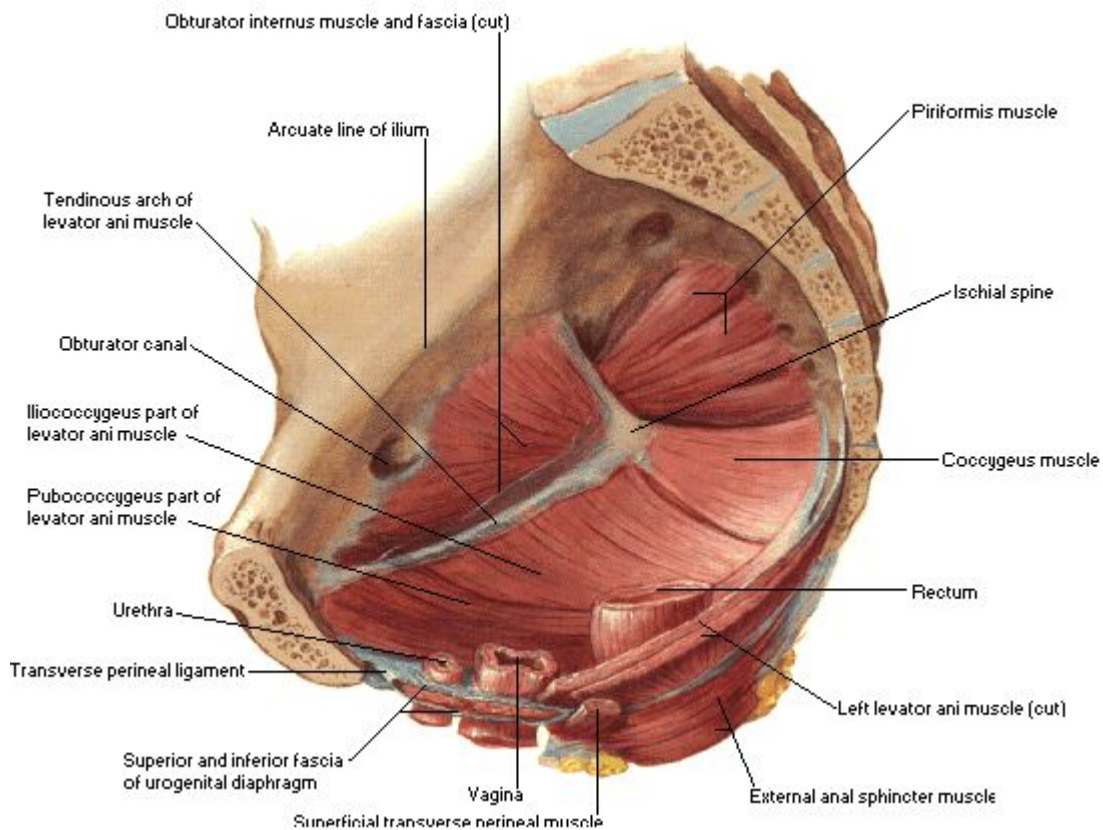


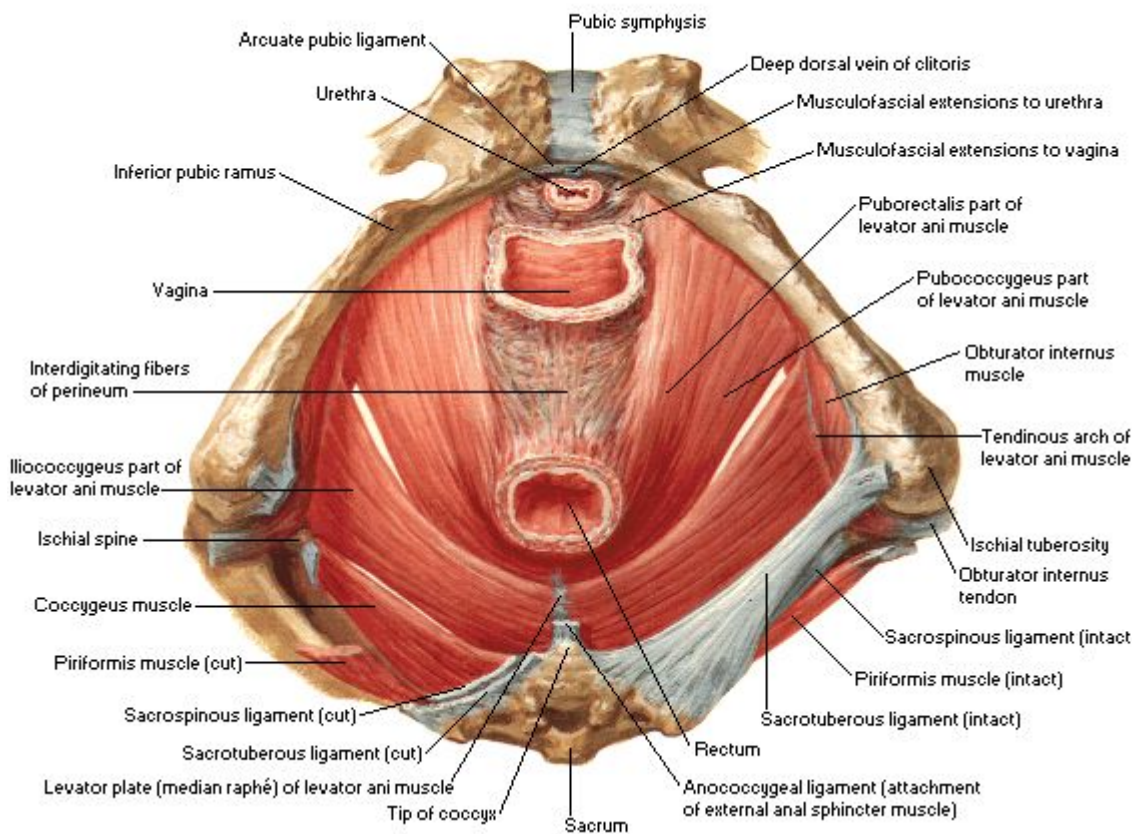
Superior View



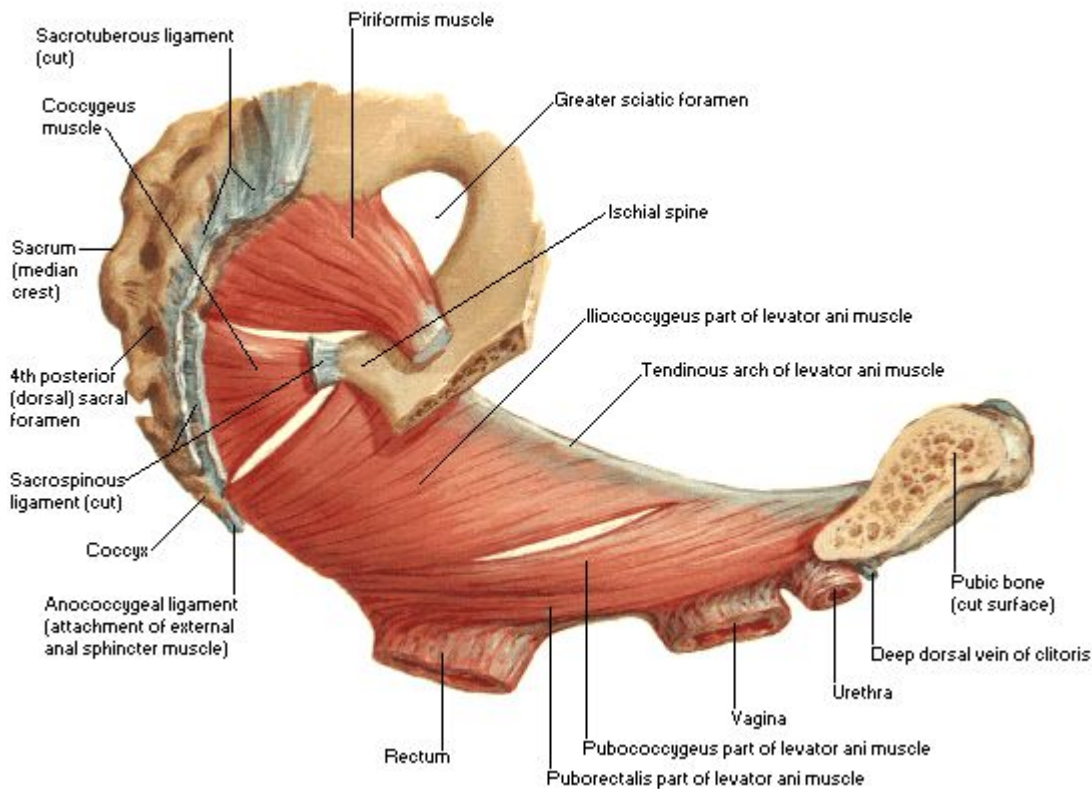
Medial View



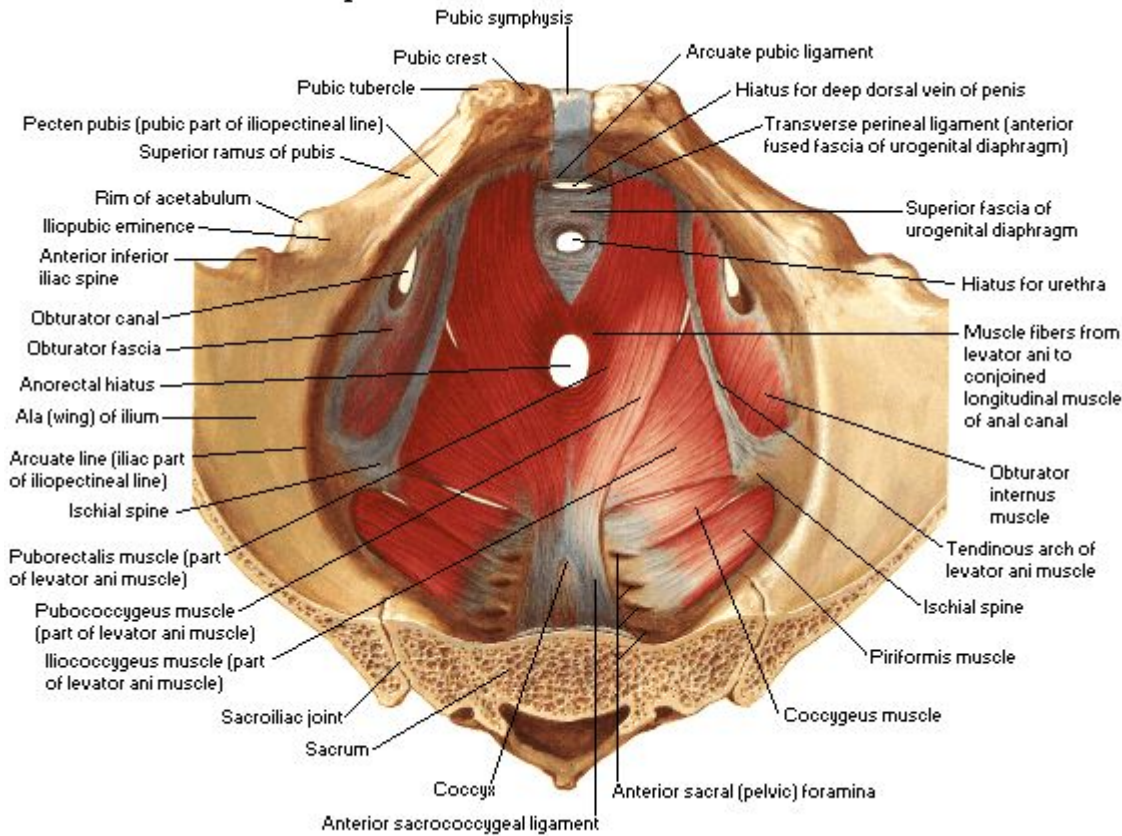
Inferior View



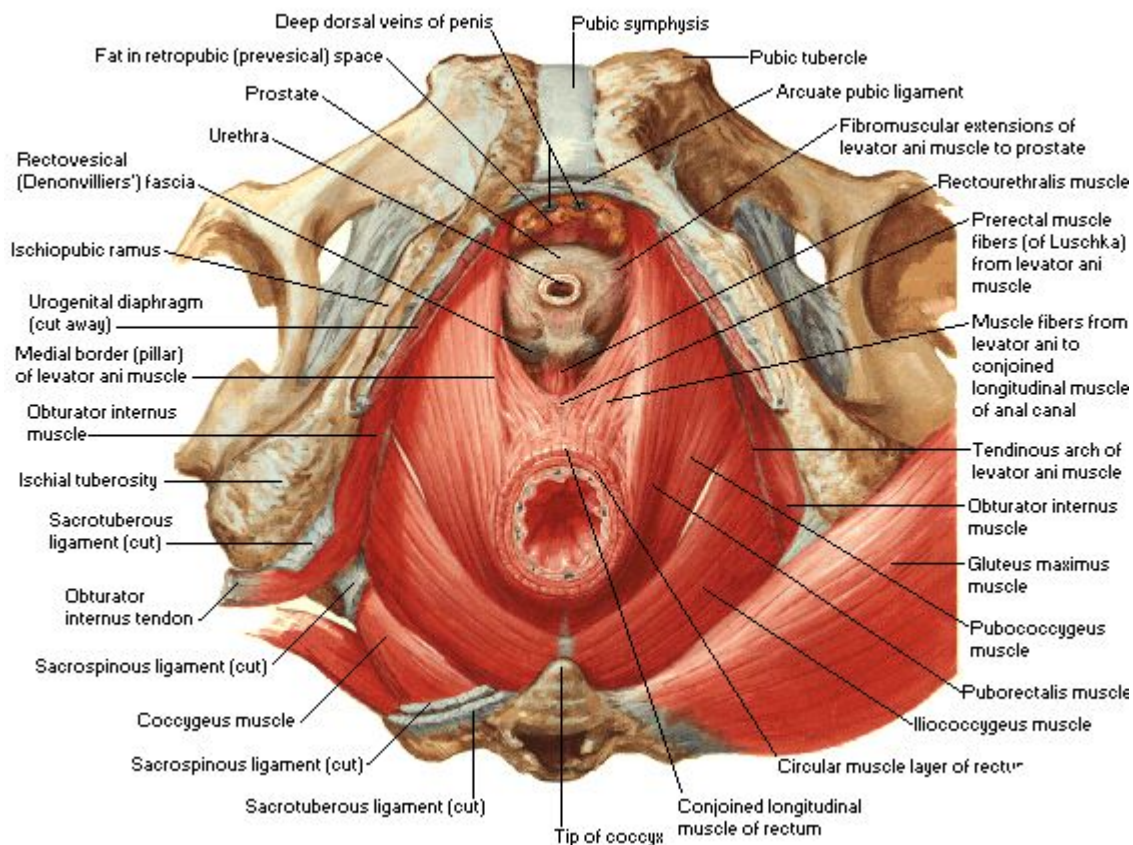
Lateral View



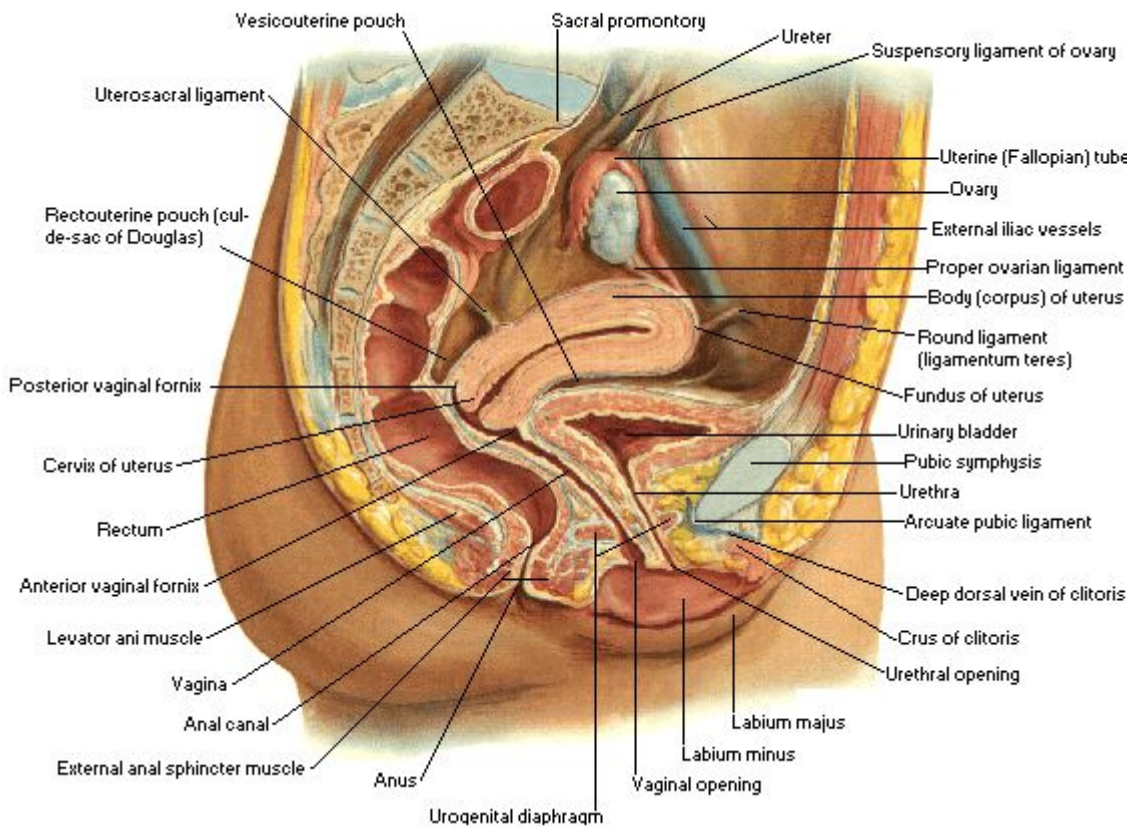
Superior View - Viscera Removed



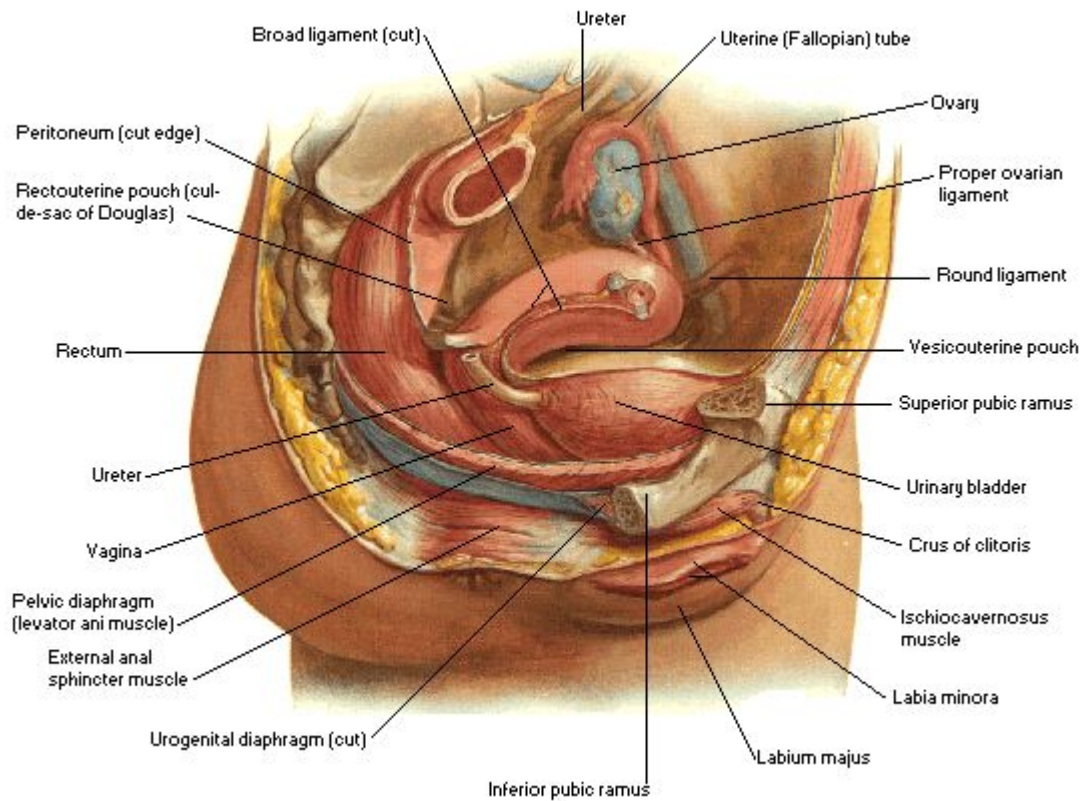
Inferior View



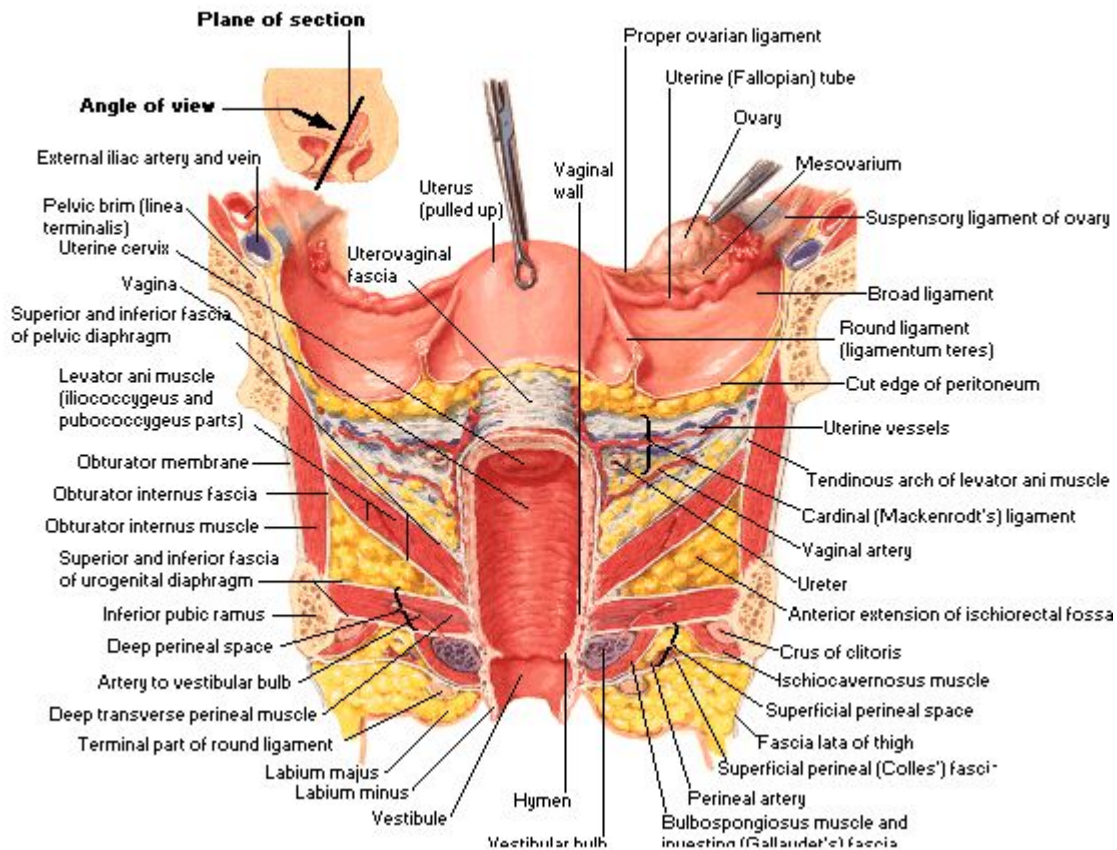
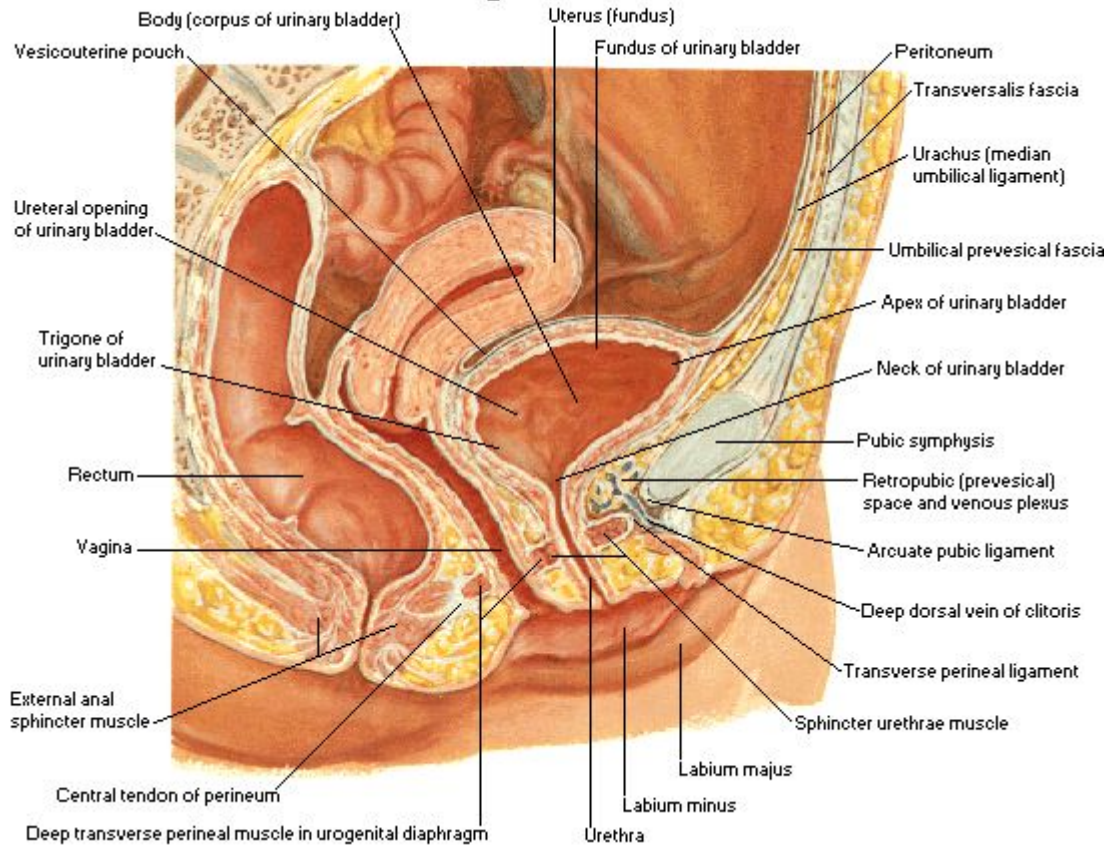
Midsagittal Section

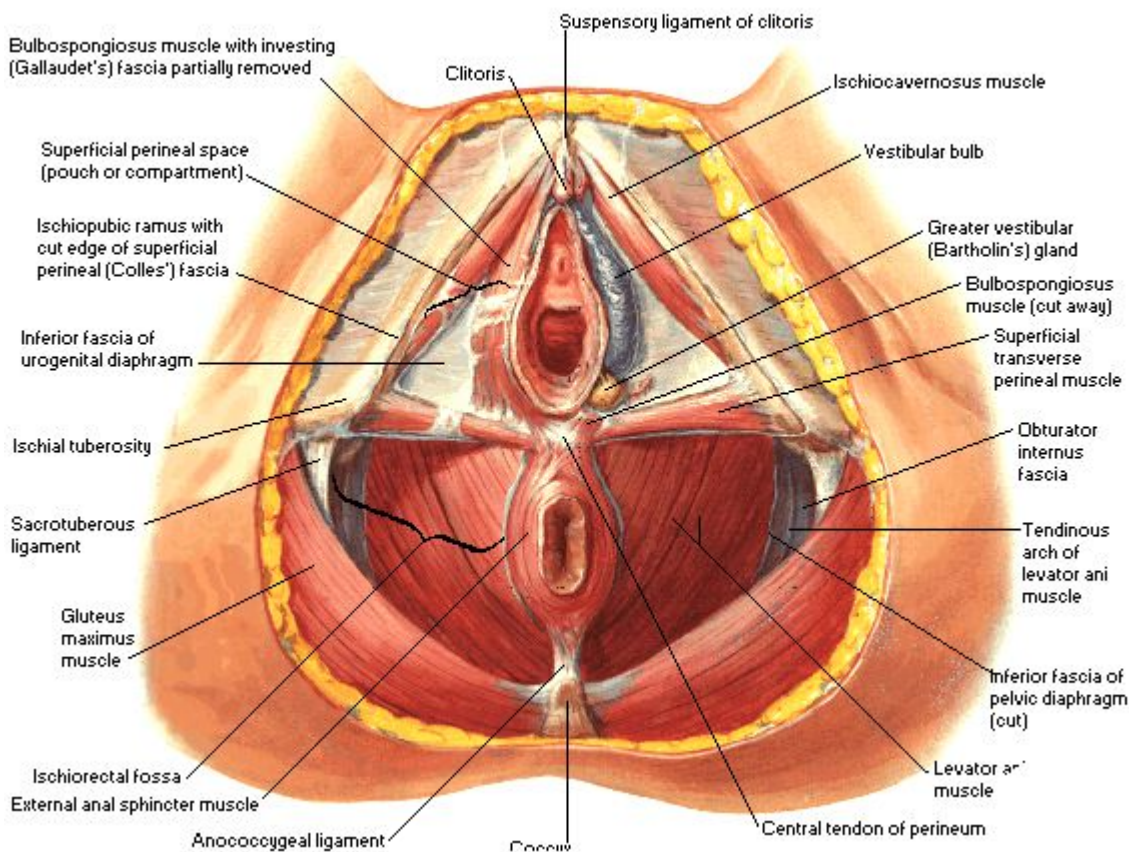
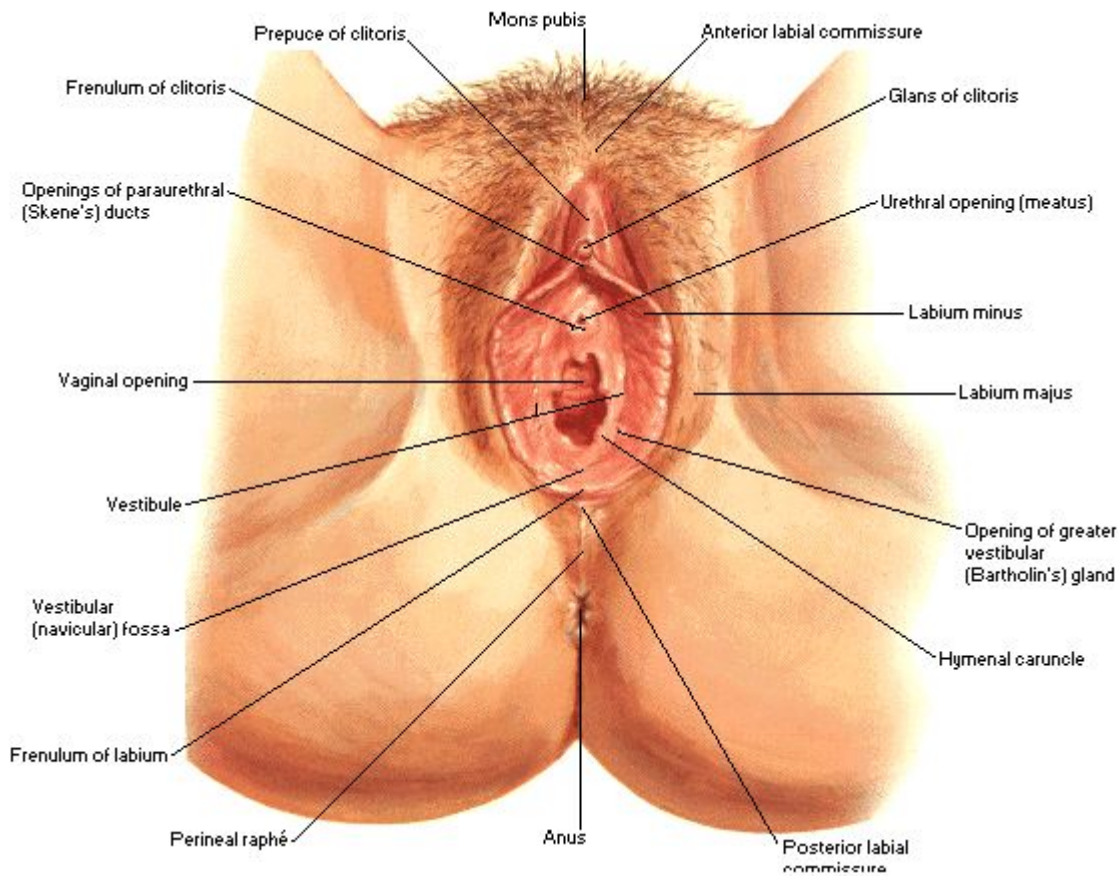


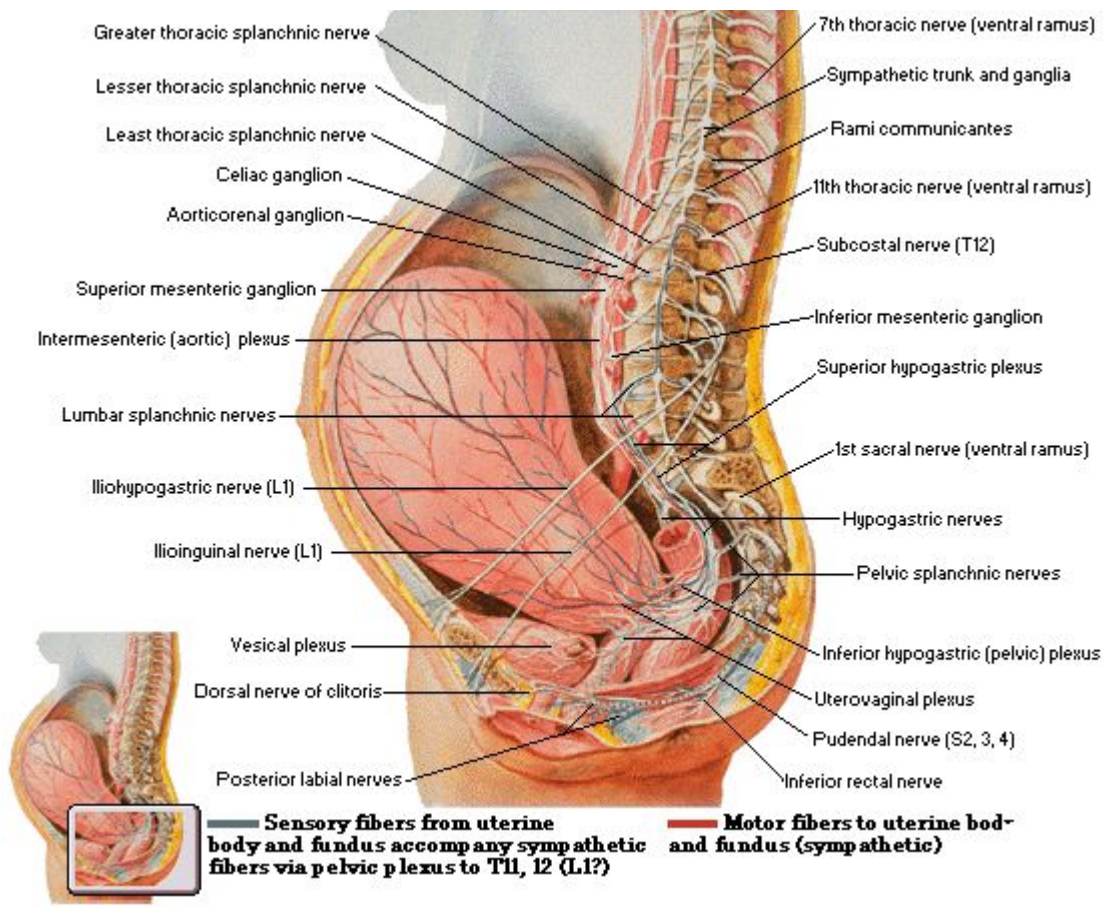
Paramedian Sagittal Section



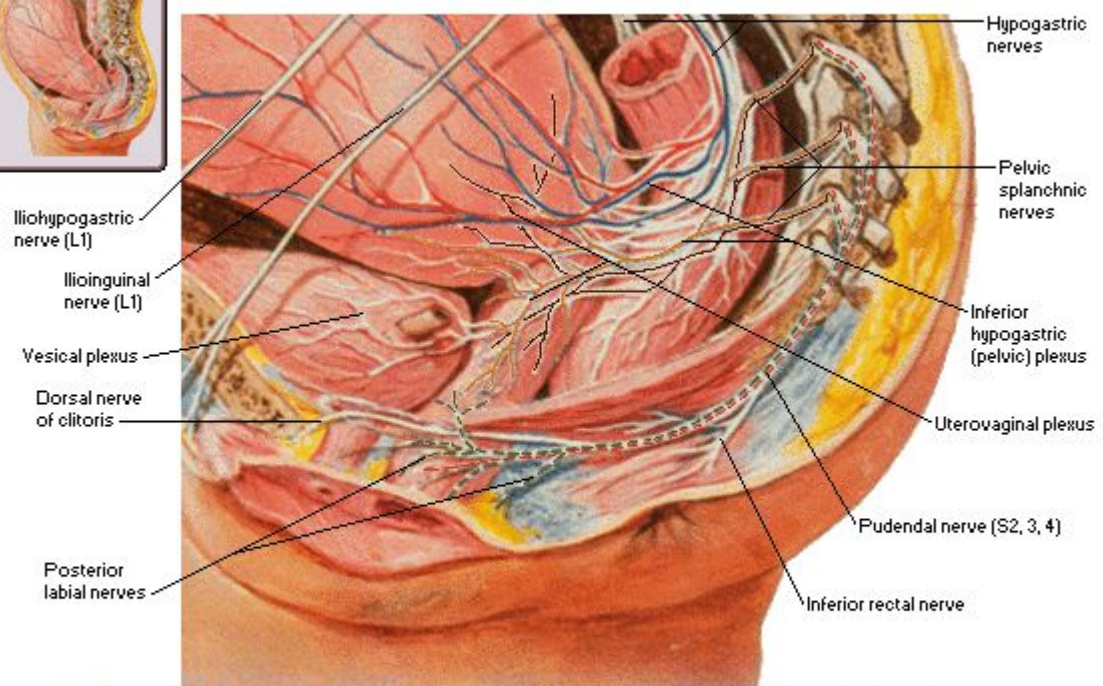
Midsagittal Section







Pelvic Area Enlarged



- Sensory fibers from uterine body and fundus accompany sympathetic fibers via pelvic plexus to T11, 12 (L1?)
- Motor fibers to uterine body and fundus (sympathetic)
- Sensory fibers from cervix and upper vagina accompany pelvic splanchnic nerves (parasympathetic) to S2, 3, 4
- Motor fibers to lower uterine segment, cervix and upper vagina (parasympathetic)
- Sensory fibers from lower vagina and perineum accompany somatic fibers via pudendal nerve to S2, 3, 4
- Motor fibers to lower vagina and perineum via pudendal nerve (somatic)